



*To access the full PDF click here.*

## **Call for Nominations for the 2023 Student Paper Prize**

**Deadline: Thursday January 18, 2024**

The International Health Economics Association (IHEA) is pleased to invite nominations for the [Annual Student Paper Prize in Health Economics](#). Nominations should include a brief letter of nomination (250 words max) and a copy of the paper (preferably .pdf). As an International Association, IHEA highly encourages those from around the globe to share this call with their networks and submit their papers for consideration.

A student is defined as someone currently studying (full or part time) at a higher education institution, at either Masters or Doctoral level. In addition, students who have completed their studies in the year previous to the announcement qualify as long as the paper was written while registered as a student.

Papers can be published or unpublished, but must be in comparable format to a published paper in Journal of Health Economics or Health Economics, and have a maximum length 8,000 words. Self-nomination is acceptable. Papers should be in English. If a submitted paper has more than one author, the student contribution must be at least 75% overall and an accompanying letter must be signed by co-authors to support this, stating the nature of their contribution (conceptualization, analysis, writing etc.). A joint student paper with 50-50 contributions is acceptable. Previous winners are not eligible.

Papers will be reviewed by an [International Committee](#) chaired by Professor Tinna Laufey Ásgeirsdóttir.

The Prize will be free registration for the 2025 IHEA Congress to present the paper in a Student Prize Special Organised Session chaired by the IHEA President, or Chair of the Prize Committee, a cash prize and the offer (if the author wishes, and the paper is unpublished) of potential fast track publication in Health Economics, subject to editorial approval. The papers in 2nd and 3rd place will receive a small cash prize and free registration for the 2025 IHEA Congress. They will be invited to give brief presentations at the IHEA Congress Student Prize Special Organized Session.

Please submit nominations, and address queries, by email to: [ta@hi.is](mailto:ta@hi.is)

---

## **Submissions Now Open for the 13th Workshop on the Economics of Risky Behavior**

**Deadline: Sunday March 3, 2024**

Submissions are now open for the 13th Workshop on the Economics of Risky Behavior, scheduled to take place in Opatija, Croatia on July 4-5, 2024.

**Keynote Speaker:** Giovanni Mastrobuoni (University of Torino)

**Organizers:**

Erdal Tekin (School of Public Affairs, American University & NBER)

Ana Bobinac, Igor Francetic, Lana Kovacevic (Croatian Health Economics Association)

**Workshop Dates:** July 4-5, 2024

The workshop aims to create a platform where researchers from diverse backgrounds can come together to enhance, refine, and challenge our comprehension of the origins and impacts of risky behavior. Additionally, it aims to facilitate the development of policies that can mitigate the costs associated with such behaviors. Risky behavior encompasses actions that are either self-destructive or place individuals at risk of harm, including criminal activities.

The workshop originated from the idea of fostering economic research that contributes to our understanding of the causes and consequences of risky behaviors and crime, as well as the effectiveness of policies and interventions to reduce their prevalence and associated costs. With these objectives in mind, the workshop showcases recent empirical research covering a broad spectrum of risky behaviors, such as crime and delinquency, smoking, alcohol and substance abuse, in both advanced and developing countries.

For more information about the workshop and the submission process, please visit our website at <https://www.american.edu/spa/risky-behavior/>.

Partial funding may be available for individuals in need of financial support. You can specify your funding requirements through the application form on the submission portal.

If you have any questions, please email Erdal Tekin at [tekin@american.edu](mailto:tekin@american.edu)

---

## 2023 IHEA Congress Report



The 2023 IHEA Congress Report is now available to view and download online! Click [here](#) to access the report.

---

## Upcoming Webinars

### Estimation Of Regression Discontinuity And Kink Designs With Multiple Running Variables – A Design Having Potential For Health System Research

**Date:** November 2, 2023

**Time:** 9:00 - 10:30 EST

The regression discontinuity (RD) design is a popular method used in a wide range of policy evaluations. Its popularity owes to the simplicity, credibility, and wide applicability of its design: individuals are assigned to treatment based on whether the value of their running variable exceeds a known threshold, effectively creating a local randomized experiment in a neighbourhood of the cutoff as long as individuals cannot precisely manipulate their running variable. With the growing availability of rich datasets, RD designs with multiple running variables (MRD) have become increasingly common, and yet unlike for single-dimensional RD designs, there is little consensus over how to conduct estimation in such settings. In this webinar, we cover the basics of the MRD design, and discuss a simple estimation method. We also discuss potential applications in healthcare settings, such as studying the effect of Medicaid when eligibility depends on income and age, and health effects of higher education when financial aid eligibility depends on test scores and family income.

**Featuring speakers:** Alden Cheng

Alden Cheng is a postdoctoral research associate at the National Bureau of Economic Research and Gies College of Business, University of Illinois Urbana-Champaign, with research interests in health economics, applied econometrics, and applied microeconomics. His research includes topics involving nursing homes for the use of novel statistical techniques to improve empirical research. He obtained his B.A. in economics, applied mathematics, and statistics from the University of California at Berkeley in 2016, and awarded in 2023, his PhD. in economics from the Massachusetts Institute of Technology.

[Click here to register](#)

## **Health And Labor Market Consequences Of Low-Value Care: The Role Of Practice Style**

**Date:** November 6, 2023

**Time:** 10:30 - 11:30 AM EST

**Abstract:** We investigate how differences in physician practice style can impact the health and labor market trajectories of individuals who experienced a sudden mental health shock: the loss of a close relative.

**Featured Speaker:** Fabrizio Mazzona

We link Dutch general practitioners' (GPs) records to administrative data on labor market and health insurance expenditures, identifying approximately 120,000 individuals who lost a close relative between 2010 and 2019. For identification, we employ the exogenous assignment of patients to GP practices and then a dynamic difference-in-differences model to compare the health and labor market trajectories of individuals treated by GPs with different propensities to prescribe benzodiazepines after the death of a close relative. Our findings indicate that patients

treated by GPs with a higher propensity to prescribe benzodiazepines experience larger increases in healthcare expenditure, reduced wages, and an increased likelihood of unemployment and disability benefits for up to six years after this negative life event.

[Click here to register](#)

## **PhDs with an Interest in Using Equity-Informative Economic Evaluation**

**Date:** November 28, 2023

**Time:** 8:00 - 9:00 am EST, 1:00 - 2:00 pm GMT

**Featuring speakers:** James Oguta & Katie Snyman

James Oguta is currently studying for a PhD in health economics and decision science at University of Sheffield, UK. His research focuses on decision modelling for cardiovascular disease prevention in sub-saharan Africa. James has a wealth of experience working in areas such as health financing, public financial management, nursing, public health, research, accounting, banking, and project management, primarily in Kenya.

Katie Snyman works in Uganda and is researching equity informed economic evaluation of novel malaria control strategies. She is also an experienced project manager with a demonstrated history of working in international research settings.

**Chairs:** Naomi Kate Gibbs and Saudamini Dabak

This webinar has a special focus on PhD students who wish to incorporate an equity focus within their research. We will be hearing from James Oguta who is near the beginning of his PhD. He will be explaining the context of his work and the key plans and questions he has around incorporating equity into the work. We will then hear from Katherine Snyman who is coming to the end of her PhD. She will present her findings and the process she has undertaken to incorporate equity. There will be time for discussion following both presentations before splitting into smaller discussion groups where people are welcome to bring their own questions and ideas.

[Click here to register](#)

## **Economics Of Genomics And Precision Medicine Webinar**

**Date:** November 30, 2023

**Time:** 6:00 - 7:00 PM EST

**Featured Speaker:** Deborah Marshall

Topic/details to come.

[Click here to register](#)

## **Economics Of Risky Health Behaviors Webinar**

**Date:** December 4, 2023

**Time:** 10:30 - 11:30 AM EST

**Featured Speaker:** Holger Strulik

Topic/details to come.

[Click here to register](#)

## **Measuring Health And Health Care Efficiency: Revised Guidelines For Measurement**

**Date:** December 5, 2023

**Time:** 10:30 AM - 12:00 PM EST

Measuring efficiency of the health systems and the productivity of the available resource use are increasingly the focus of governments, both nationally and at sub-national level. Policy practitioners and healthcare service delivery professionals are discerningly critical about how the efficiency is measured, and how validity and robustness of the results are established. This webinar presents revised guidelines about designing efficiency studies that provide values at the end-user level for different contexts / settings. We shall also discuss potential consequences of not following the guidelines that are presented in this webinar.

**Featured speaker:** Bruce Hollingsworth is a professor of Health Economics and he leads the Health Economics at the Lancaster University, UK. His research and international collaborative publications are primarily within the theme of efficiency measurement concerning the production of health and health care, social determinants of health, and the translation of research into practice.

[Click here to register](#)

## **Advances In Measurement And Valuation Of Paediatric Health-Related Quality Of Life (HRQoL): Key Results From The Australian QUOKKA Research Program**

**Date:** December 7, 2023

**Time:** 4:30 - 5:15 AM EST

**Featured speaker:** QUOKKA Research Team, University of Melbourne

The webinar will be organised across three areas of work to advance methods for generating and valuing health-related quality of life (HRQoL) for children with a focus on strengthening decision-making.

New evidence on measurement of paediatric HRQoL featuring results from the Paediatric Multi-Instrument Comparison (P-MIC) study, which generated a comprehensive database of over 6,800 children to understand the performance of alternative paediatric HRQoL measures and new research to understand and strengthen self-report versus proxy-report.

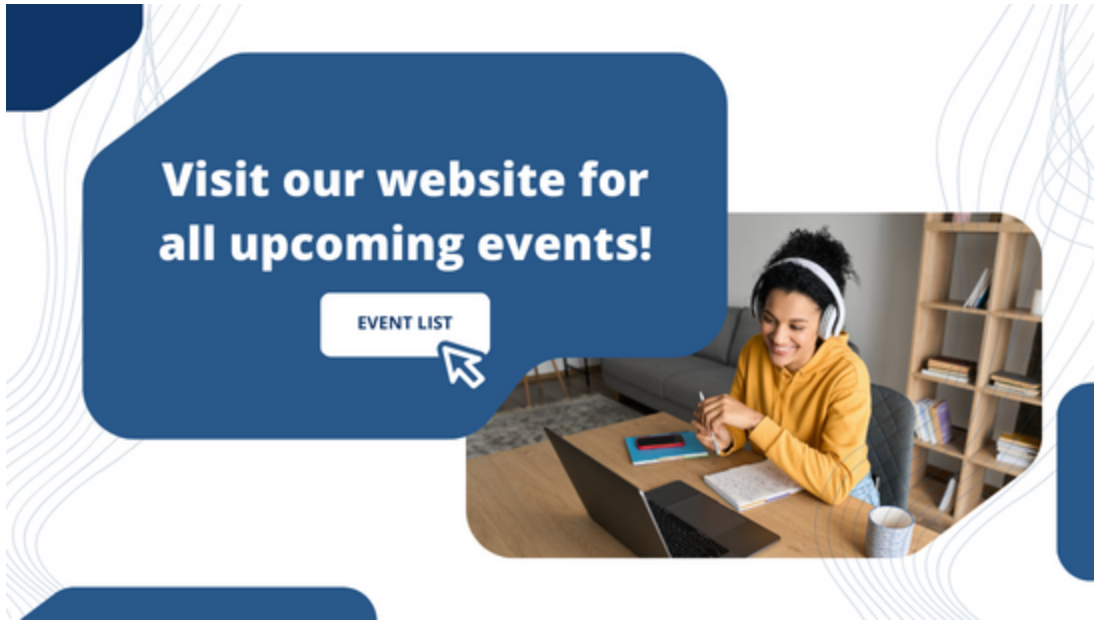
Research findings on valuation for paediatric HRQoL including how the general population make choices when valuing paediatric HRQoL and methods for improving stated preference elicitation.

New evidence on the societal views about whether child quality-adjusted life year (QALY) gains should be given different weights than adult QALY gains, and how those views differ by child age and type of QALY improvement.

The provisional plan is a one and a quarter hour time slot composed of 5 minutes of initial housekeeping, an approximate 55 minute presentation and 15 minutes for discussion.

[Click here to register](#)

**Check out the full event list [here](#).**



### Did you know?

IHEA currently has 14 active special interest groups - Special Interest Groups (SIGs) are a key platform for professional interaction between IHEA members with a common interest. Membership in SIGs is open to all active IHEA members - more information on these groups and how you can join can be found [here](#).

Check out our website [here](#).

